



Recfishing  
RESEARCH



FRDC  
FISHERIES RESEARCH AND  
DEVELOPMENT CORPORATION

# RecFishing Research

Research, Development & Extension Strategy 2024–2029

The RecFishing Research Program is a partnership between the Australian Recreational Fishing Foundation (ARFF) and the Fisheries Research & Development Corporation (FRDC), which aims to identify RD&E priorities for recreational fishing over the next 5-10 years and influence where FRDC will place its investments.

The RecFishing Research Strategy shapes investment in RD&E by identifying six Areas of Impact which contribute to achieving a Vision for the recreational fishing sector.



# Strategic Frame

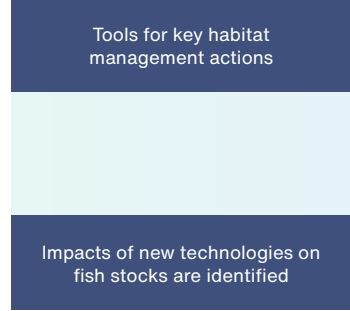
By articulating a Long-Term Goal and Vision, the key outcomes needed to overcome these challenges, pathways are identified in 6 Pathways within a Strategic Frame.

## Challenges (& opportunities)



## Outputs

### Pathway 1: Thriving Fisheries



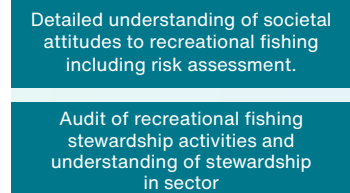
### Pathway 2: Governance



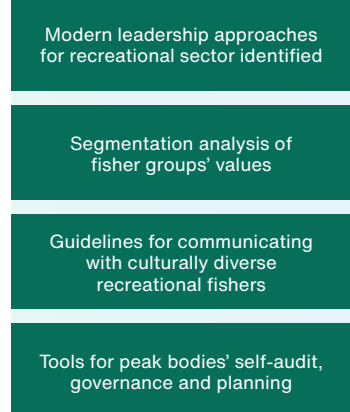
### Pathway 3: Fisheries Management



### Pathway 4: Stewardship



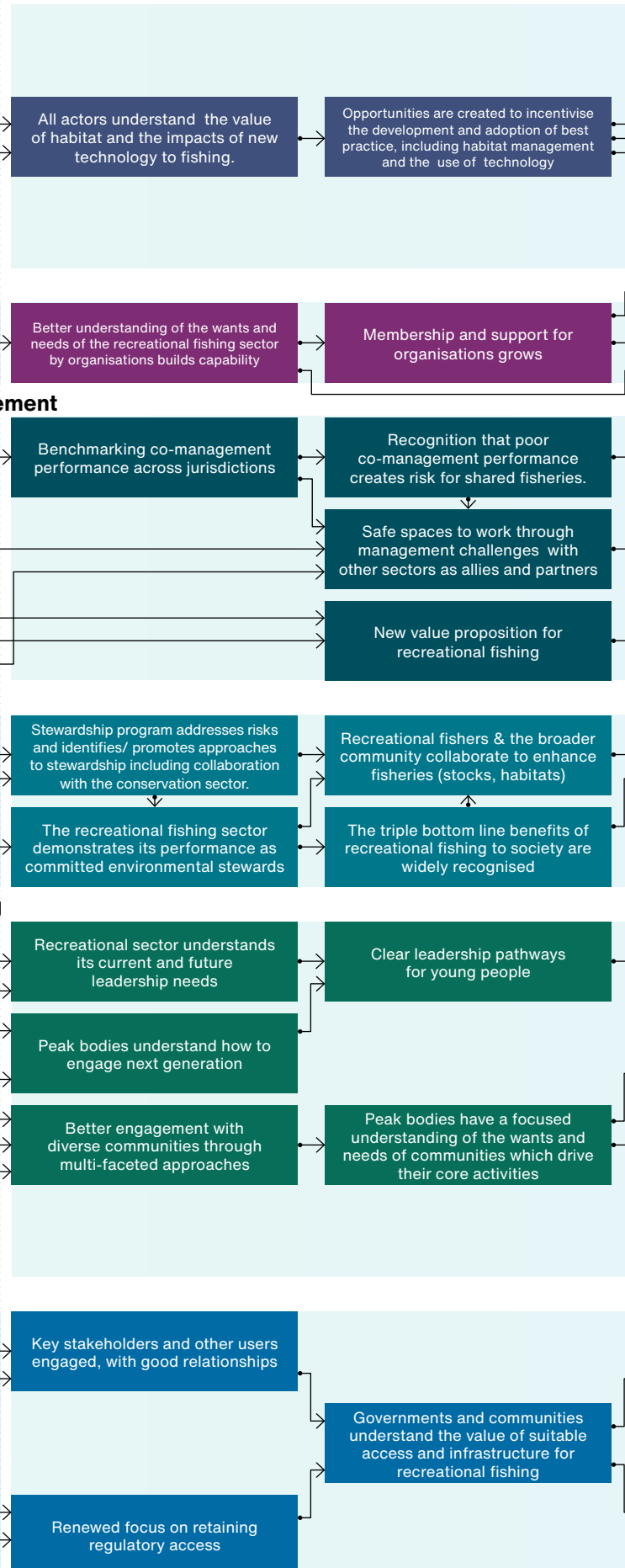
### Pathway 5: Capacity Building



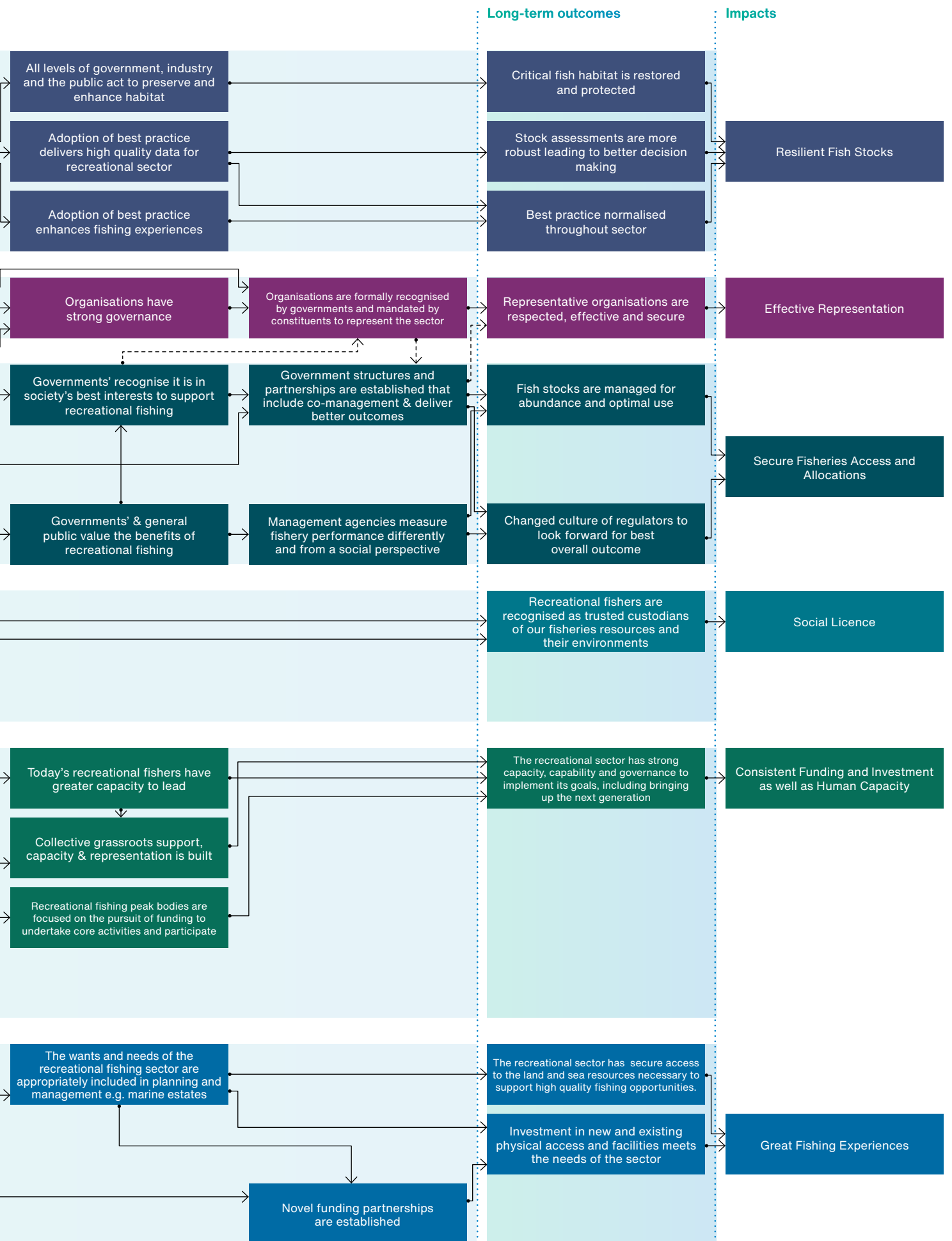
### Pathway 6: Inclusive Access



## Shorter-term outcomes



Major challenges to achieving this and the major long-term possible outputs from RD&E and short-term outcomes are



# Pathways to Impacts

## Pathway 1: Thriving Fisheries

Long Term Outcome:

- 1. Critical fish habitat is restored and protected**
- 2. Stock assessments are more robust leading to better decision making**
- 3. Best practice normalised throughout sector**

Addressing the challenges of environmental change and the impact of new technologies, the recreational sector is incentivised to identify, adopt and normalise best practice to generate knowledge and promote adaptive mindsets among all fishers. This will build resilience in fisheries through understanding the needs of fish, restored fish habitats and sustainable fishing practices that ensure thriving fish populations.

## Pathway 2: Governance

Long Term Outcome:

- 4. Representative organisations are respected, effective and secure**

Recreational fishing peak bodies need to be better able to represent the values of their constituents, partly by having a better, structured understanding of the diverse values and expectation of fishers. The recreational sector is recognised by government and supported politically and achieves informed representation through strong governance, as well as the leadership and organisational capacity of recreational fishing bodies to represent the diversity of fisher constituencies.

## Pathway 3: Fisheries Management

Long Term Outcome:

- 5. Fish stocks are managed for abundance and optimal use**
- 6. Changed culture of regulators to look forward for best overall outcome**

Addressing challenges in fisheries management, this pathway emphasises the adoption of new management frameworks and performance indicators at an operational level, as well as changes in governance towards more co-management in high-level partnerships across the wider fishing sector and governments. This will help provide the credibility to partner in safe spaces with other fishing sectors, where information on better models and progress against existing commitments can inform action to convince governments to change their approaches to management.

Better information is also needed on the wider social benefits from recreational fishing to help persuade regulators more operationally to move to managing for abundance and optimal use against inclusive metrics, to better accommodate all sectors equitably.

## Pathway 4: Stewardship

Long Term Outcome:

- 7. Recreational fishers are recognised as trusted custodians of our fisheries resources and their environments**

Recognising that the values of society are shifting, the recreational sector develops opportunities to collaborate with conservation programs to preserve and restore habitat and enhance fisheries thereby, demonstrating its custodianship of fisheries resources and their environments. These commitments not only help fishing but are also recognised in society widely, helping to deliver social licence.

## Pathway 5: Capacity Building

Long Term Outcome:

- 8. The recreational sector has strong capacity, capability and governance to implement its goals, including bringing up the next generation**

Addressing challenges of leadership development and succession in the recreational fishing sector, as well as a lack of understanding of the diverse and shifting values, demands and capacities of fisher communities and their youth, the recreational sector needs to support leadership among today's fishers as well as develop future leaders.

## Pathway 6: Inclusive Access

Long Term Outcome:

- 9. The recreational sector has secure access to the land and sea resources necessary to support high quality fishing opportunities.**
- 10. Investment in new and existing physical access and facilities meets the needs of the sector**

Recognising the challenges from underinvestment in critical infrastructure, loss of access an aging population and the needs of those with disabilities, the recreational sector partners with government and other organisations to invest in building and maintaining facilities and access for diverse fishing experiences.

By articulating a Long-Term Goal and Vision, the key challenges to achieving this and the major long-term outcomes needed to overcome these challenges, possible outputs from RD&E and short-term outcomes that would deliver the long-term outcomes are identified in a Strategic Frame.

